



PhoenixVoler

USER GUIDE

CONTENTS

- 1. Introduction..... 3
 - 1.1. Install PhoenixVoler 4
 - 1.2. Work area..... 7
- 2. Getting Start 10
 - 2.1. Connect to PI series..... 10
 - 2.2. Project Mode..... 11
 - 2.3.1. Work with Project Mode 11
 - 2.3. File Mode 16
 - 2.3.1. Work with File Mode 16

1. Introduction

PhoenixVoler is a simple application to transmit file between PC and PI series. After coding the program, Use PhoenixVoler can easily start a communication to transmit your file to PI series. There are two mode in PhoenixVoler. The description as below.

- **Project Mode:** Project mode is work with Skywalker program. After using Skywalker to build a program, you have to transmit program to PI series, project mode can easily package a program and upload.
- **File Mode:** A normal way to transmit file. It can see all the file in PI series.

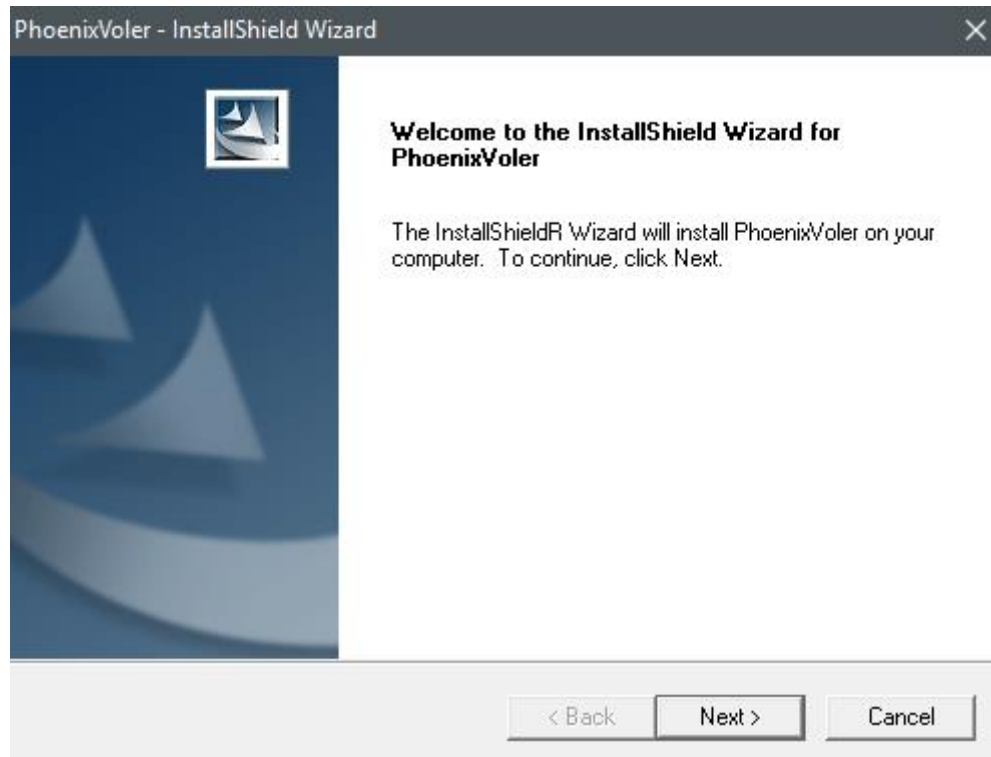
- System requirements

To run the program, one of the windows operating system is required.

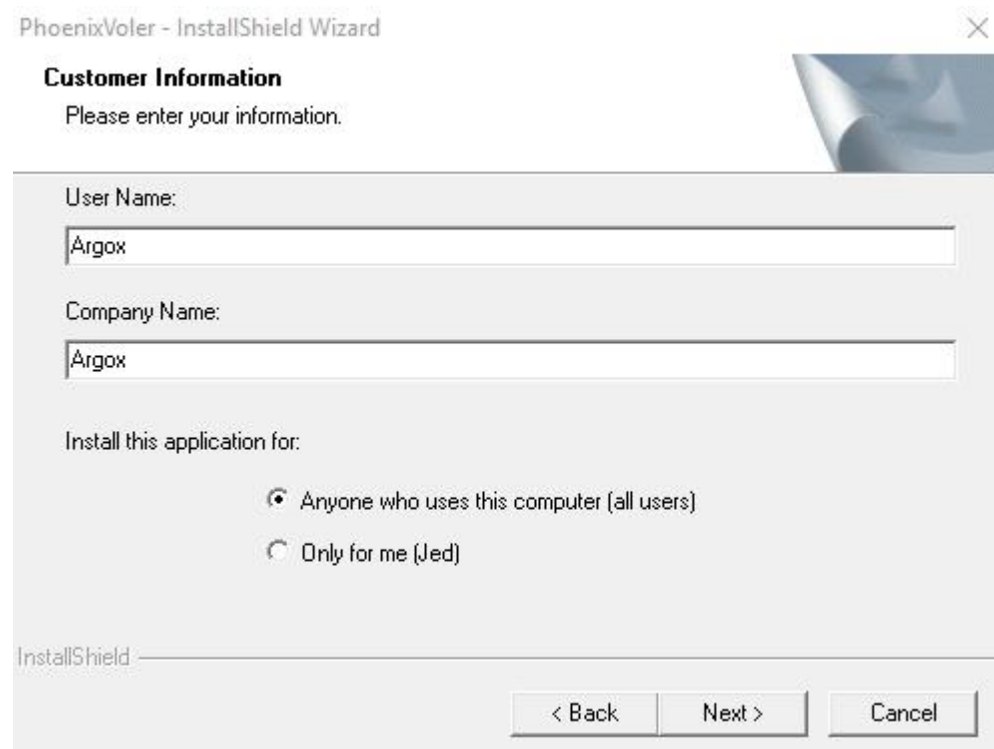
- Windows XP
- Windows 7
- Windows 8
- Windows 10

1.1. Install PhoenixVoler

1. In the PhoenixVoler- InstallShield Wizard, click Next.



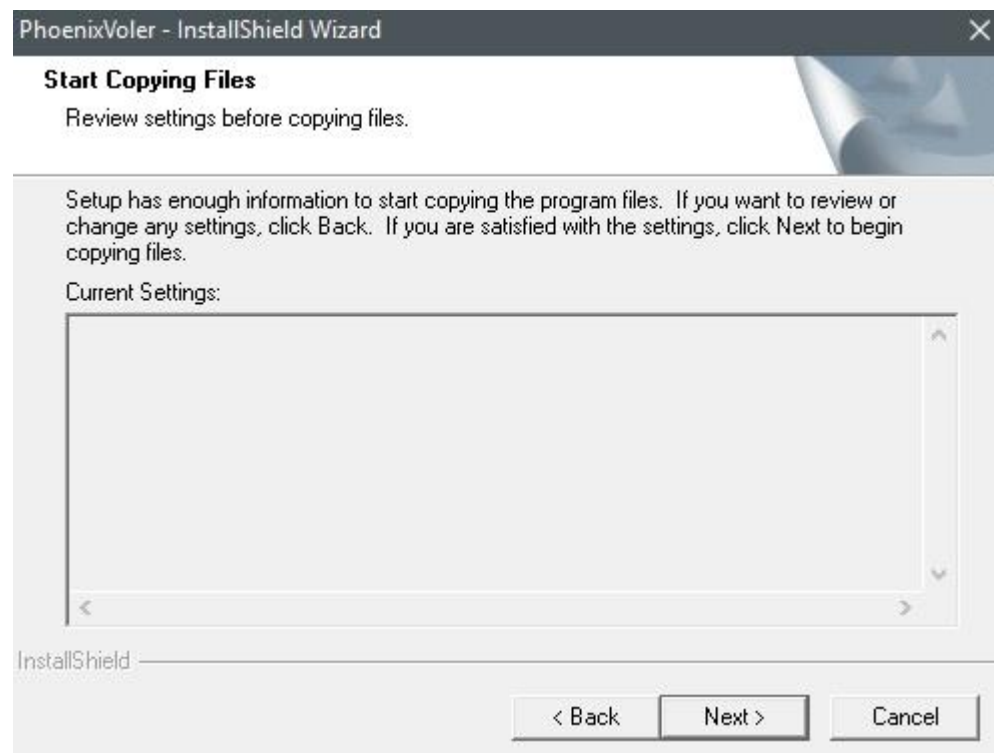
2. Enter User Name and Company Name, then click "Next".



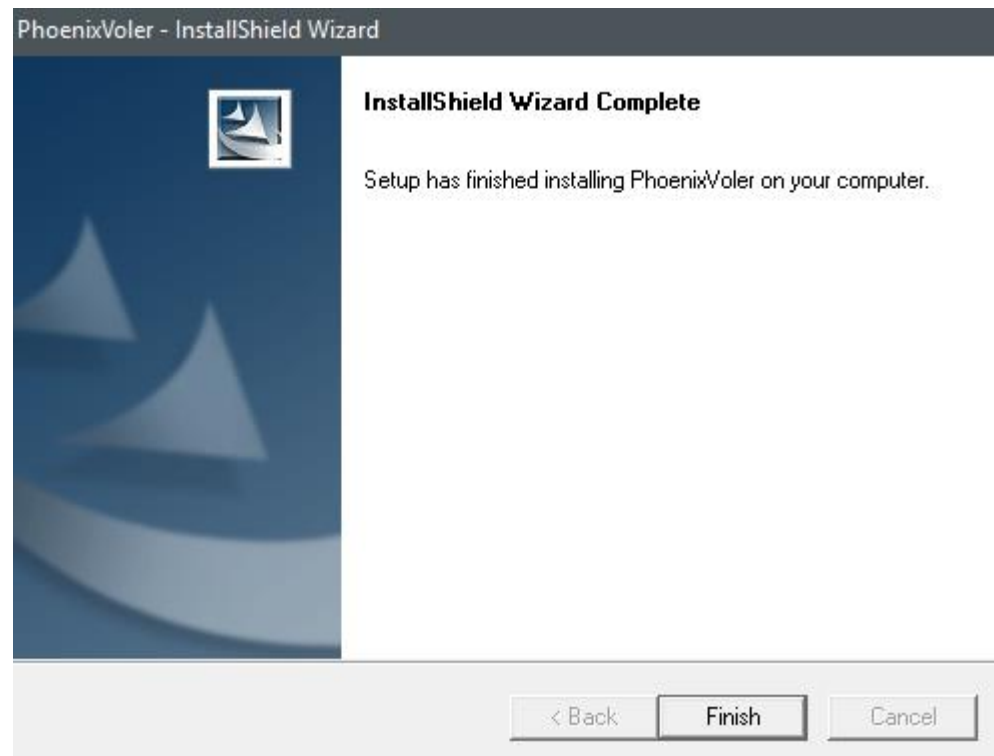
3. Click typical option and click next.



4. Click "Next" will start installation.



5. After installation is complete, click "Finish".



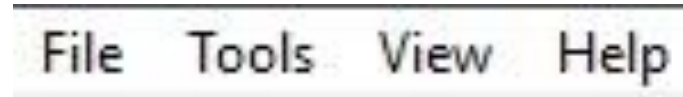
1.2. Work area

Run PhoenixVoler in your computer.

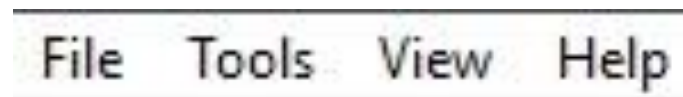


- **Menu Bar:** It includes basic program menus.
- **Toolbar:** Toolbar offers connection setting and start to connect.
- **PC pane :** Display the File in your PC.
- **PI series pane:** Display PI series file.

Menu Bar

Project Mode:

- File:
 - New Connect:** Start a new connection
 - Close Connect:** Disconnect connection
 - Exit:** Close PhoenixVoler.
- Tools:
 - F/W upgrade:** Terminal firmware upgrade.
- View:
 - Project Mode:** Switch to Project Mode.
 - File Mode:** Switch to File Mode
 - Toolbar:** Display Toolbar or not.
 - Status Bar:** Display status bar or not
- Help:
 - About PhoenixVoler...:** PhoenixVoler firmware

File Mode

- File:
 - Exit:** Close PhoenixVoler.
- Setup:
 - Com Setup:** Setup communication port.
- Tools:
 - F/W upgrade:** Terminal firmware upgrade.
- View:
 - Project Mode:** Switch to Project Mode.
 - File Mode:** Switch to File Mode
 - Toolbar:** Display Toolbar or not.
 - Status Bar:** Display status bar or not
- Help:
 - About PhoenixVoler...:** PhoenixVoler firmware

Toolbar



Create a connection to device.



Remove a connection to device.



PhoenixVoler firmware version.

Toolbar



Setup communication port..



Create a connection to device.



PhoenixVoler firmware version.

2. Getting Start

2.1. Connect to PI series

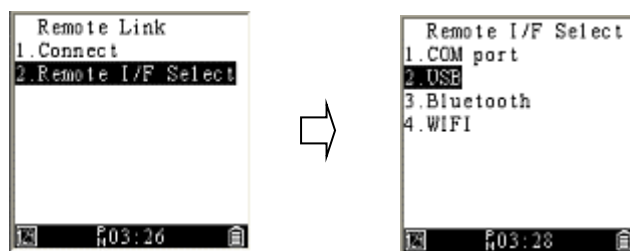
Use Remote link to connect PC with USB

Step 1. After link USB cable between PI series and PC, press “**Power**” key to open PI series.

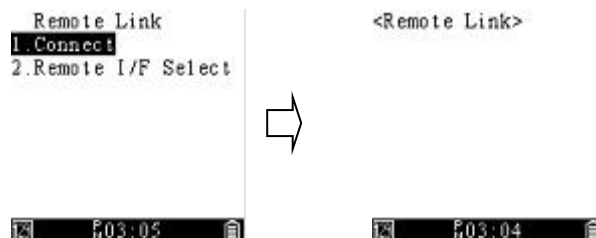
Step 2. Move curse to “**Remote Link**” and press “**ENT**” key.



Step 3. Enter “**Remote I/F Select**” and Choose “**USB**”. It will automatically go back



Step 4. Choose “**Connect**”.

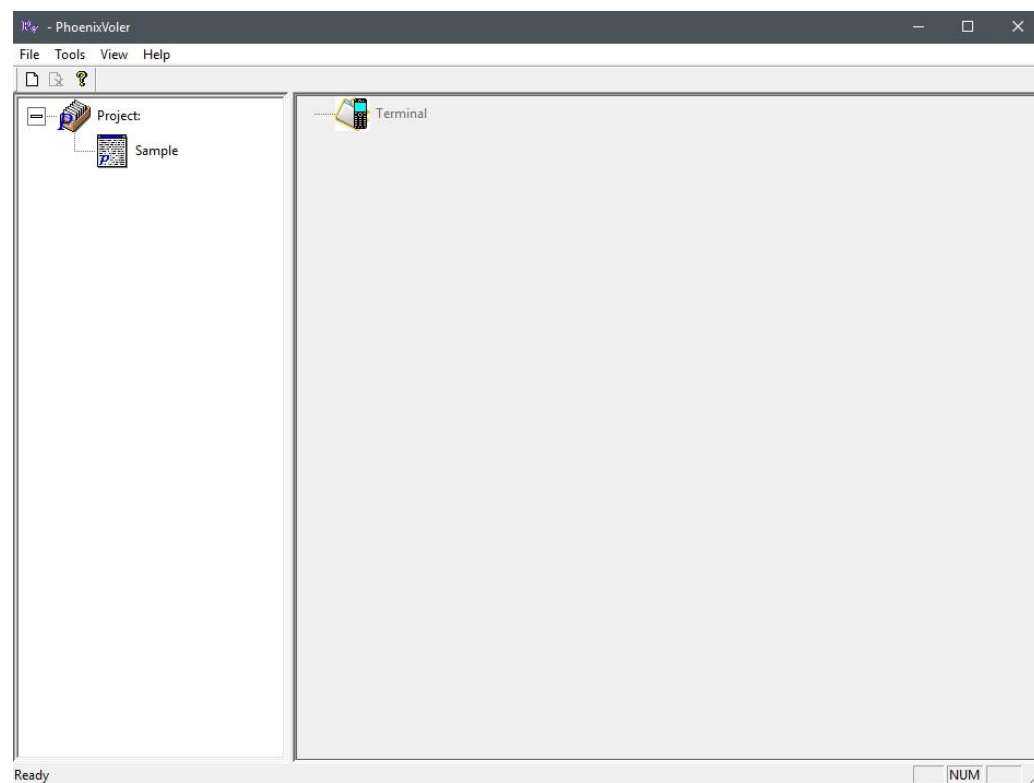


Step 5. In PhoenixVoler or Everlink, Click Comm setup will show the model number. Successfully connected to PC.

2.2. Project Mode

Project mode is a specific mode for Skywalker. After finished your program by Skywalker, You will compile and generate *.prj* file. Project mode is made for transmit *.prj* to PI series. If you want to upload other extension file, click View to switch to File mode.

2.3.1. Work with Project Mode

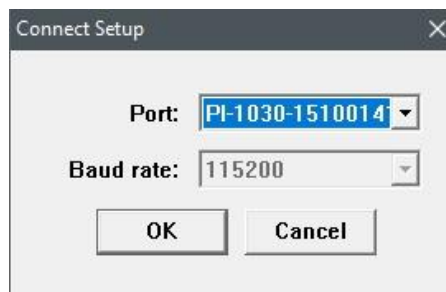


Connect to PI series

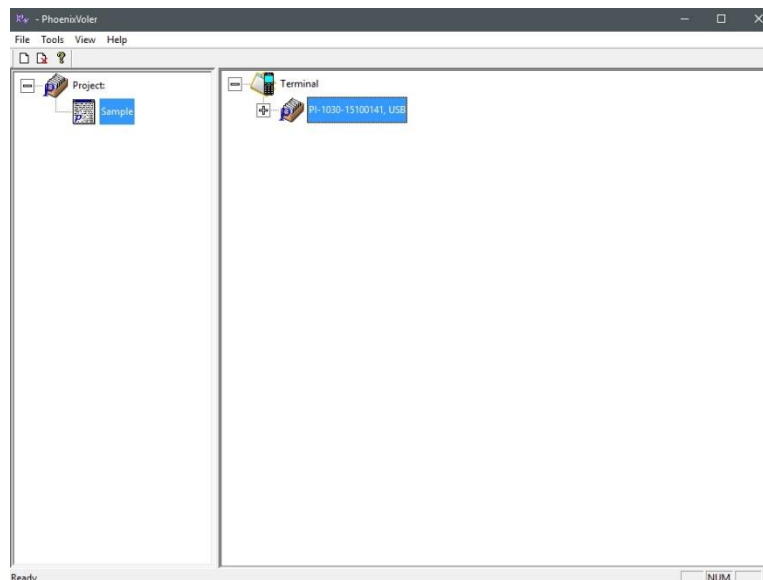
1. Start PI Series connection with USB or COM (Refer to PI Series manual CH3.1.2).



2. Click "New" in tool bar to set a new connection.
3. Click Combo box from Port to choose a port. If PI series connect with USB port, the model will automatically show in the box as below. If PI series connect with COM port, Choose a right COM port and Baud rate. Click OK to start connection.



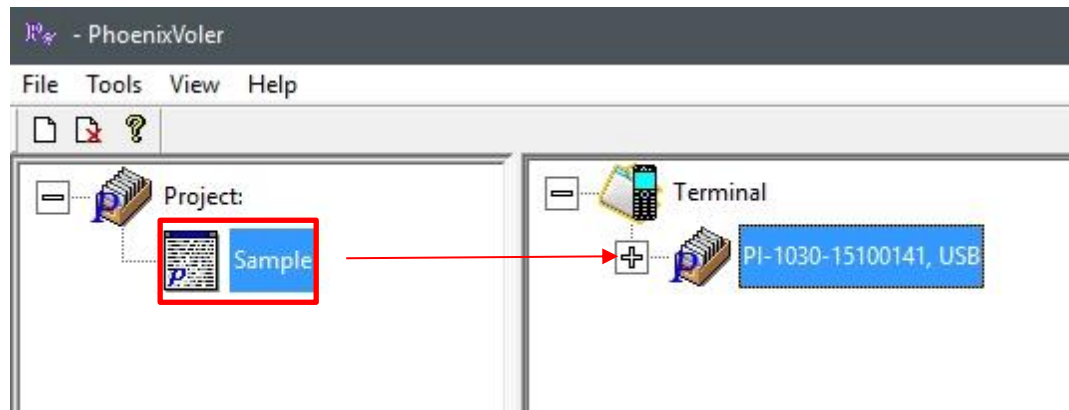
4. When PI series pane show the model, connection successful.



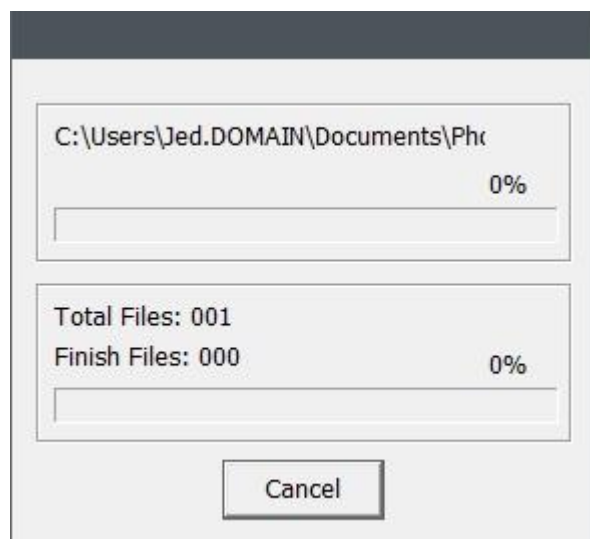
Note Repeat connect step can connect multiple PI series.

Upload project to PI series

1. Choose a program under the project. Drag it from PC pane to PI model.



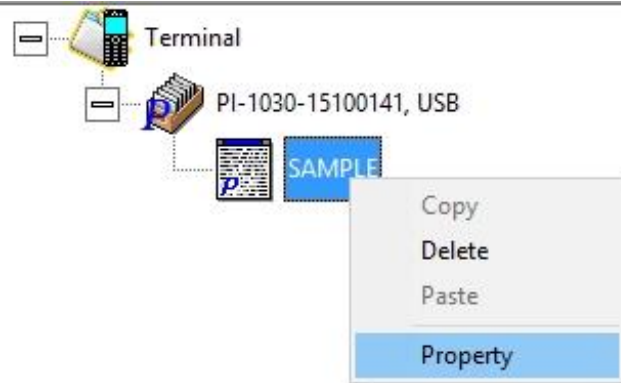
2. Start to upload project.



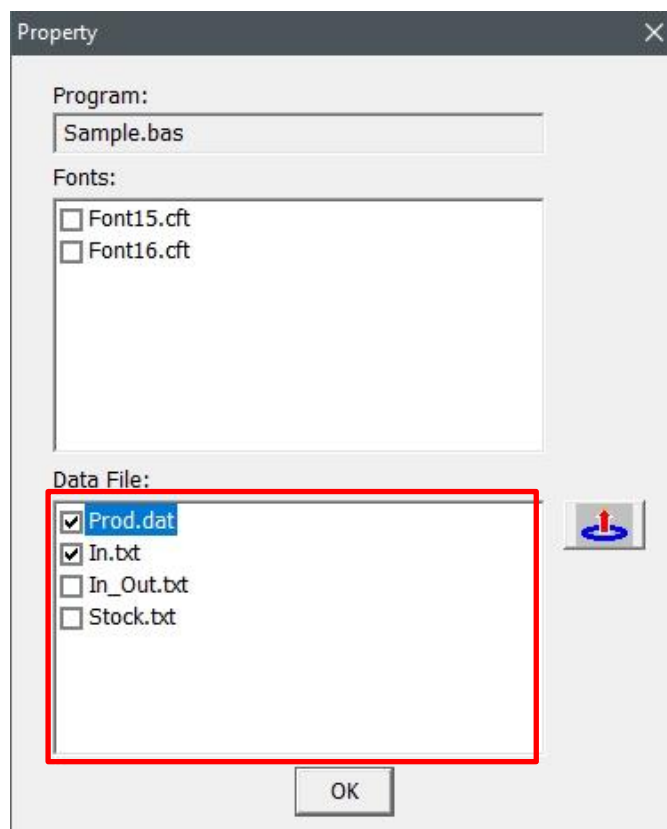
Note PhoenixVoler Only load the file(*.prj) under My Document \ PhoenixVoler.

Download project Data

1. Right click on PI series project to open a menu then click property.



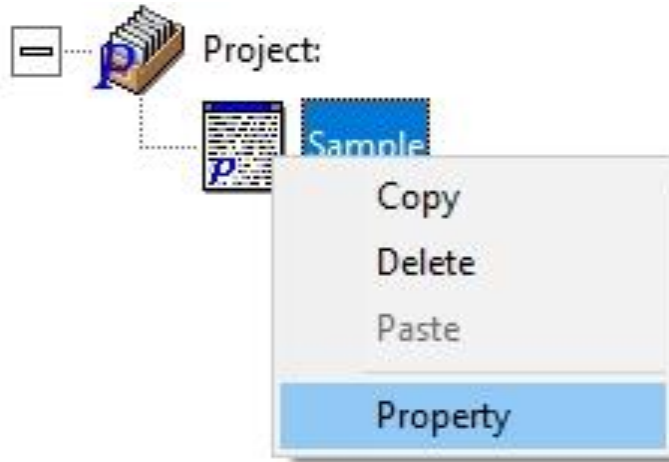
2. Click the file you want in the Data File frame. Click  to start transmit.




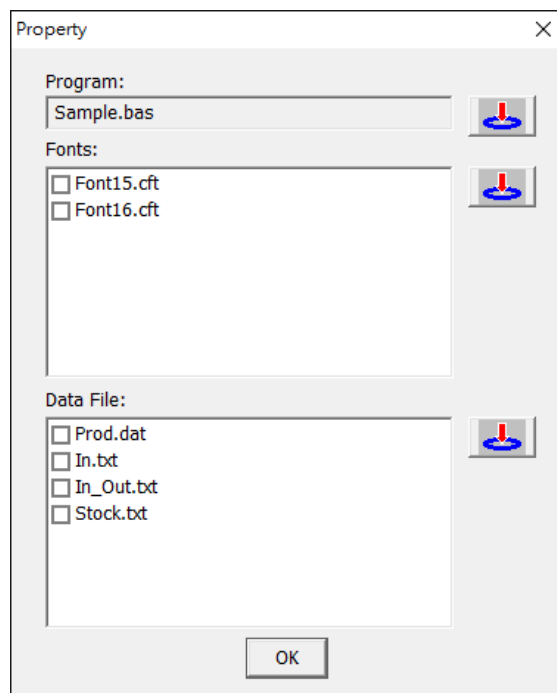
Note The file will transmit to My Document\PhoenixVoler\project name\PI series model.

Transmit Select Data

1. Right click to open menu, click Property.

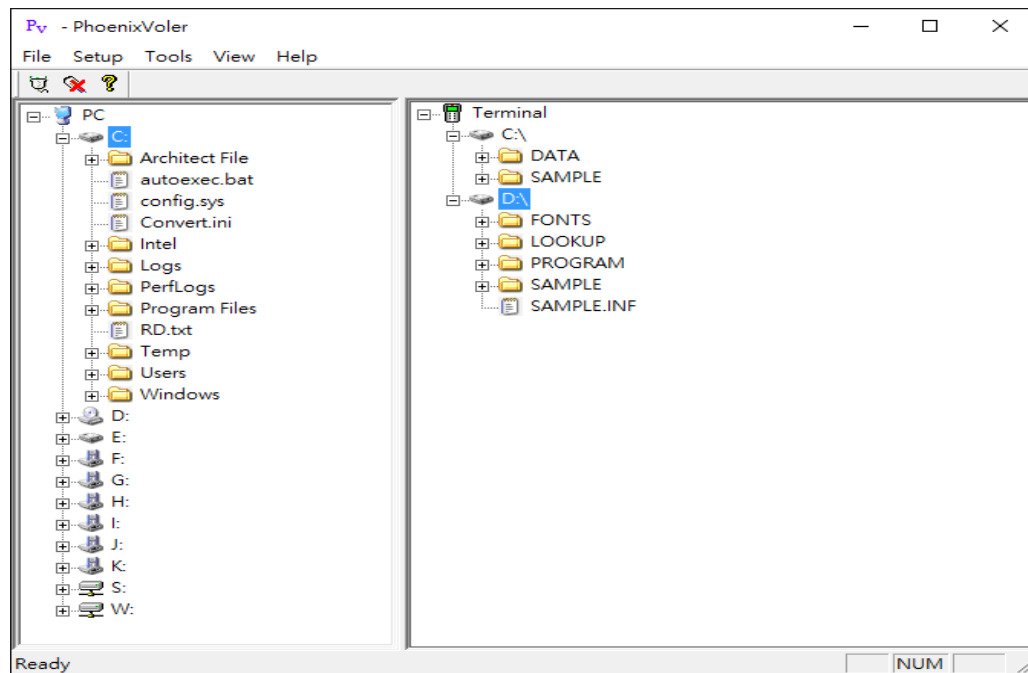


2. Click the file you want to transmit and click  to start uploading.




2.3. File Mode

File mode is a common way to transmit program. If you use Skywalker to code a program, click “View” to switch to project mode.

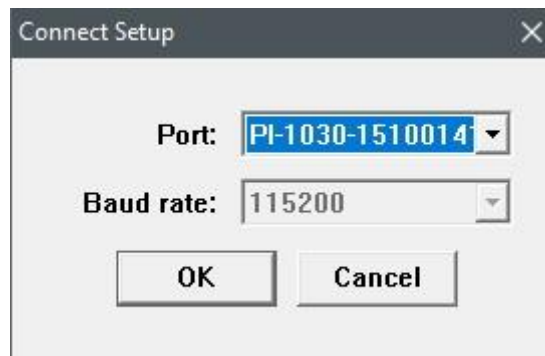



2.3.1. Work with File Mode

Connect to PI series

1. Start PI Series connection with USB or COM (Refer to PI Series manual CH3.1.2).
2. Click  "Com Setup" in tool bar to set a new connection.
3. Click Combo box from Port to choose a port. If PI series connect with USB port, the model will automatically show in the box as below. If PI series connect with COM port, Choose a right COM port and Baud rate. Click OK to

start connection.



4. Click  **"Connect/Disconnect"** button to start connection.
5. When PI series pane show the data, connection success !

Upload or download Data

1. After start a new connection, click a file you want and drag it to start transmit.

